

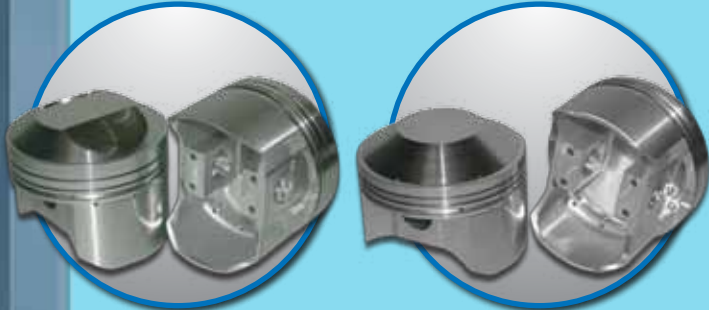
Racing Piston Kits

Order: 1-800-827-9210

Int'l: 1-321-636-9480

www.mtceng.com

sales@mtceng.com



Racing Piston Kits

KIT CONTAINS 4 PISTONS, RINGS, WRIST PINS, AND BUTTONS OR CLIPS

Pro Mod

Bore Size	Style	Deck Height	Valve Size	Pin Size	Part Number
83MM	2 Valve	.775 w/18MM	42 in. 36 ex.	17 or 18 MM	MTC-2VPM-83
85MM	2 Valve	.775 w/18MM	42 in. 36 ex.	17 or 18 MM	MTC-2VPM-85
87MM	2 Valve	.775 w/18MM	42 in. 36 ex.	18 MM	MTC-2VPM-87
89MM	2 Valve	.775 w/18MM	42 in. 36 ex.	18 MM	MTC-2VPM-89
83MM	4 Valve Suzuki	.835 w/18MM	31 in. 28.5 ex.	18 or 20 MM	MTC-4VPM-83
85MM	4 Valve Suzuki	.835 w/18MM	31 in. 28.5 ex.	18 or 20 MM	MTC-4VPM-85

Pro Stock

85MM	2 Valve	.635 w/17MM	No Pockets	17MM	MTC-2VPS-85-17
		.615 w/18MM		18MM	MTC-2VPS-85
87MM	2 Valve	.615 w/18MM	No Pockets	18MM	MTC-2VPS-87
89MM	2 Valve	.615 w/18MM	No Pockets	18MM	MTC-2VPS-

45 Degree Dome

KIT CONTAINS BUTTONS INSTEAD OF CLIPS

83MM	2 Valve Kawasaki	.645 w/17MM	37 in. 32 ex.	17 or 18MM	MTC-2V45-83
85MM	2 Valve Kawasaki	.645 w/17MM	37 in. 32 ex.	17 or 18MM	MTC-2V45-85

Top Fuel

KIT CONTAINS BUTTONS INSTEAD OF CLIPS

80MM	2 Valve	.735 w/17MM	36 in. 31 ex.	17, 18, or 20MM	MTC-TF2V-80
83MM	2 Valve	.676 w/20MM	36 in. 31 ex.	20MM	MTC-TF2V-83
83MM	4 Valve	.900 w/18MM	31 in. 31 ex.	18 or 20MM	MTC-TF4V-83

Note: Valve pocket is cut 1MM larger than valve size listed

Hector Arana
2009 NHRA Pro-Stock Champion

